

“High Frequency Ceramic Solutions”

1.57 GHz Chip Antenna

P/N 1575AT47A40

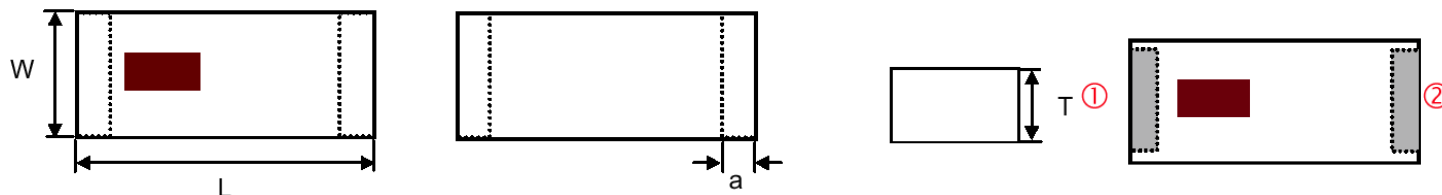
Detail Specification Page 1 of 3

Part Number	Frequency (MHz)	Peak Gain (XZ-V)	Ave. Gain (XZ-V)	Return Loss
1575AT47A40_	1555 - 1595	-1.0 dBi typ.	-3.0 dBi typ.	9.5 dB min.

Input Power	Impedance	Operating Temperature Range	Reel Qty
3 Watts max	50 Ω	-40 to +85°C	1000

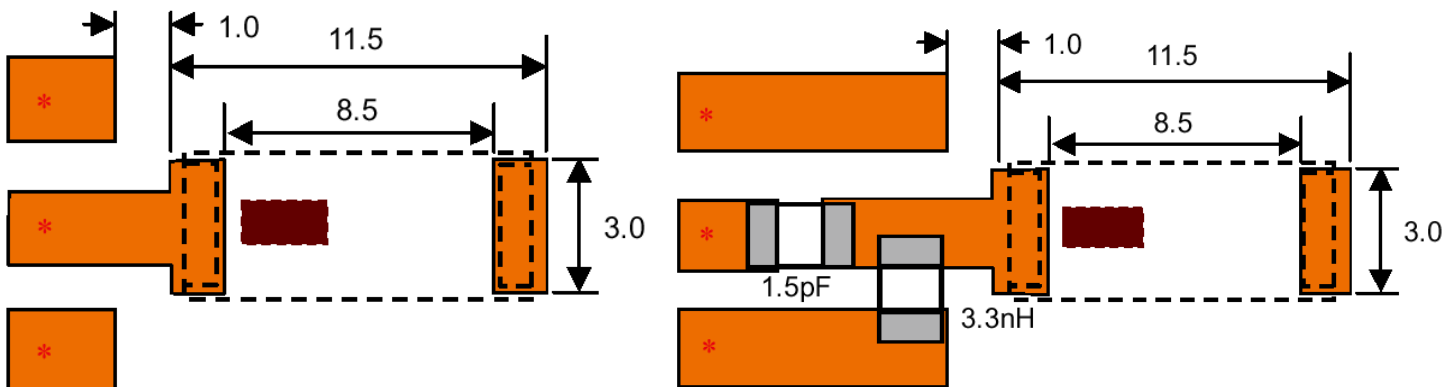
Mechanical Dimensions

	L	W	T	a	Terminal Configuration
Inches	0.394 ± .008	0.118 ± .008	0.030 ± .008	0.029 ± .008	1 INPUT
mm	10.0 ± 0.2	3.0 ± 0.2	0.77 ± 0.2	0.75 ± 0.2	2 NC



Mounting Considerations

Mount these devices with brown colored side facing up. Line width should be designed to provide 50Ω impedance matching characteristics.



a) Without Matching Circuit (moderate bandwidth)

b) With Matching Circuit* (wide bandwidth)

*Matching circuit and component values will depend on PCB layout.

Johanson Technology, Inc. reserves the right to make design changes without notice.
All sales are subject to Johanson Technology, Inc. terms and conditions.

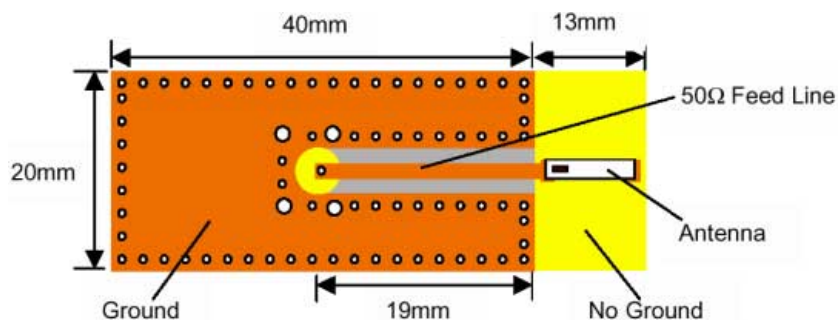
“High Frequency Ceramic Solutions”

1.57 GHz Chip Antenna

P/N 1575AT47A40

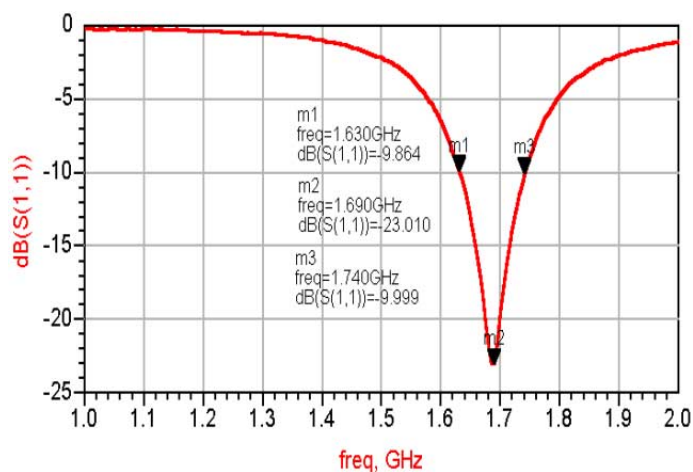
Detail Specification Page 2 of 3

Test Board for Electrical Characteristic Measurements

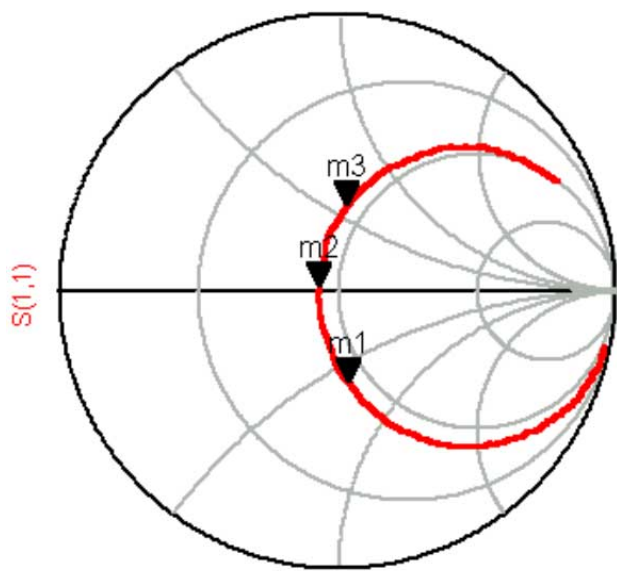
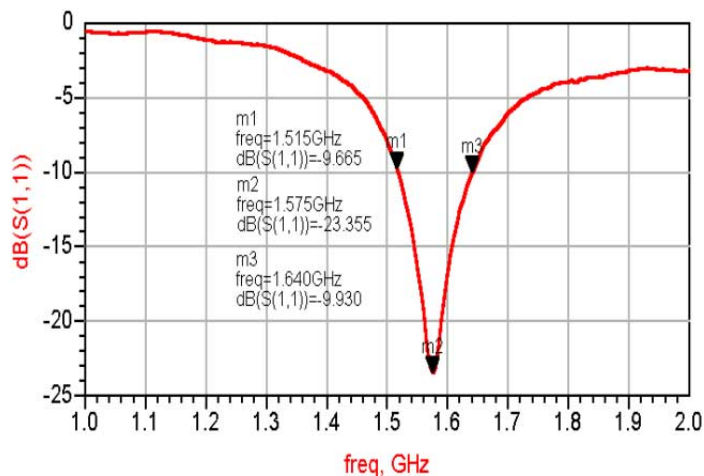


Typical Return Loss for P/N 1575AT47A40

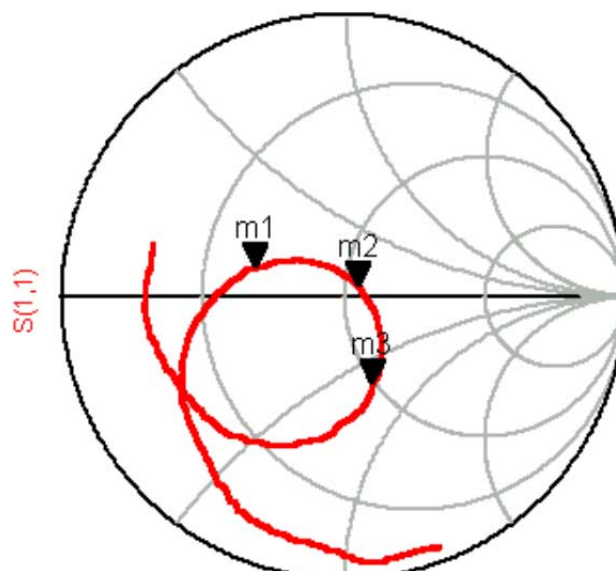
a) Without Matching Circuit



b) With Matching Circuit



freq (1.000GHz to 2.000GHz)



freq (1.000GHz to 2.000GHz)

“High Frequency Ceramic Solutions”

1.57 GHz Chip Antenna

P/N 1575AT47A40

Detail Specification Page 3 of 3

Typical Radiation Patterns for P/N 1575AT47A40

